

Compact form. Powerful AI.

Lenovo + Intel's first
Small Form Factor AI desktop

ThinkCentre neo 50s Gen 6



Why AI belongs on every desk

90%

of workers say
their organization
uses at least one
AI technology¹

82%

of companies use
AI regularly²

64%

of businesses
believe AI boosts
productivity³



Up to

72% AI adoption in IT & telecom⁴

Faster troubleshooting

86%

of healthcare organizations
use AI extensively⁵

Smarter patient care in tight spaces



66%

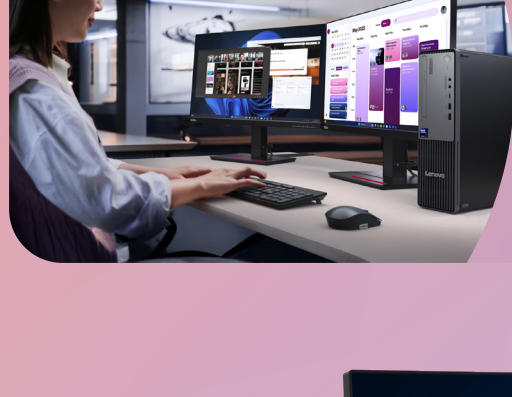
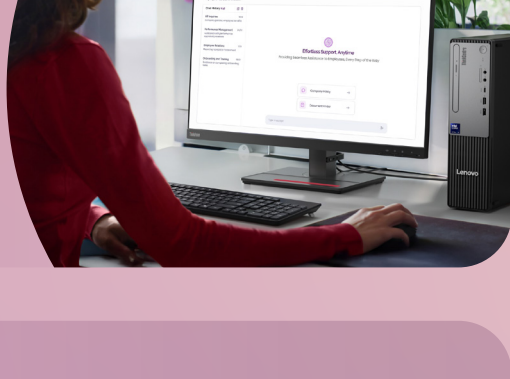
of creatives make better
content with AI⁶

From bold ideas to improved designs

85%

of customer interactions
will shift to AI by 2025⁷

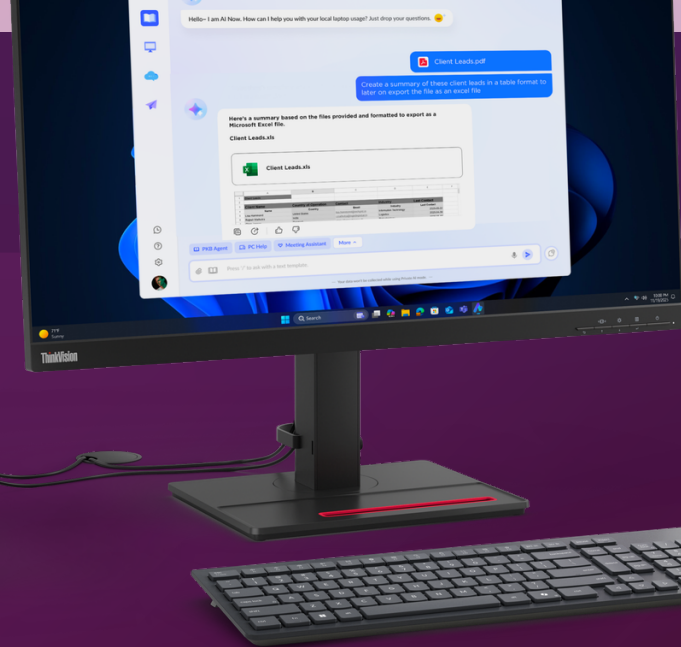
Clearer calls & smoother workflows



91%

of SMBs using AI
report revenue growth⁸

Smarter planning & faster decision-making



70%

of PCs projected
to be AI-capable
by 2028⁹

*Monitor, keyboard, and mouse are sold separately.

ThinkCentre neo 50s Gen 6 is already AI-powered

Future-ready, today

AI-driven productivity in everyday workflows



Managing IT



Analyzing data



Enhancing
collaboration

Up to Intel® Core™ Ultra 7 processors

Run business apps,
calls, and creative tools
without slowdowns



Up to 64GB DDR5 memory

Keep multiple workloads
open, without lag



Wi-Fi 7 + Smart Connect

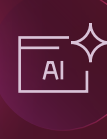
Switch seamlessly between
devices during meetings,
calls, or design reviews



Up to 13 TOPS AI Performance

dNPU with up to 30 TOPS*

Boost daily tasks like
troubleshooting, data crunching,
and smarter calls



Up to 2TB Gen 4 SSD + 2TB HDD storage

Store everything from
campaigns to customer
data in one place



ThinkShield Security dTPM 2.0

Protect customer data, patient
info, and business plans with
enterprise-grade security



Recycled materials
& FSC® packaging

Energy Star® 9, EPEAT™ Gold,
TÜV Ultra Low Noise

Lenovo CO₂ Offset Service



**Smaller footprint
for business
and the planet**

Lenovo CO₂ Offset Service



ThinkCentre neo 50s Gen 6

Small form. Maximum productivity.

Learn more



That's the power of Intel Inside®

*Design reserve

¹https://www.ey.com/en_us/consulting/businesses-can-stop-rising-ai-use-from-fueling-anxiety

²https://www.cledara.com/blog/ai-report-2025

³https://www.allaboutai.com/resources/ai-statistics/workplace/

⁴https://azumo.com/artificial-intelligence/ai-insights/ai-in-workplace-statistics

⁵https://www.blueprism.com/resources/blog/ai-in-healthcare-statistics/

⁶https://blog.adobe.com/en/publish/2024/02/02/creative-pros-generative-ai-usage

⁷https://www.allaboutai.com/resources/ai-statistics/workplace/

⁸https://www.salesforce.com/news/stories/smb-ai-trends-2025/

⁹https://www.canalys.com/newsroom/ai-pc-market-2024

www.lenovo.com

© 2025 Lenovo. All rights reserved. Depending on many factors such as the processing capability of peripheral devices, file attributes, and other factors related to system configuration and operating environments the actual transfer rate using the various USB connectors on this device will vary and is typically slower than the data rates as defined by the respective USB specifications: = 5 Gbit/s for USB 3.1 Gen1; 10 Gbit/s for USB 3.1 Gen2 & 20 Gbit/s for USB 3.2. These products are available while supplies last. Prices shown are subject to change without notice. For any questions concerning price, please contact your Lenovo Account Executive. Lenovo is not responsible for photographic or typographic errors. Warranty: For a copy of applicable warranties, write to: Warranty Information, 500 Park Offices Drive, RTP, NC 27709, Attn: Dept. ZPYA/B600. Lenovo makes no representation or warranty regarding third-party products or services. Trademarks: Lenovo, the Lenovo logo, Rescue and Recovery, ThinkPad, ThinkCentre, ThinkStation, ThinkVantage, and ThinkVision are trademarks or registered trademarks of Lenovo. Microsoft, Windows, and Vista are registered trademarks of Microsoft Corporation. Intel Inside, Intel Core, and Core Inside are trademarks of Intel Corporation in the U.S. and/or other countries. Other company, product and service names may be trademarks or service marks of others.